

IOWA

Office of Campus Safety

How to be #HawkeyeSafe

SAFETY TIPS AND RESOURCES FOR ADAPTING TO COLLEGE LIFE

Presented by the Community Outreach Team

OUR MISSION

Foster a safe, supportive, and inclusive campus environment by building partnerships, solving problems, and working collaboratively to reduce crime, preserve peace, and provide safety services equally to all members of the community.

WHO RESPONDS IF MY STUDENT NEEDS HELP?



IOWA

Office of Campus Safety

Our Team

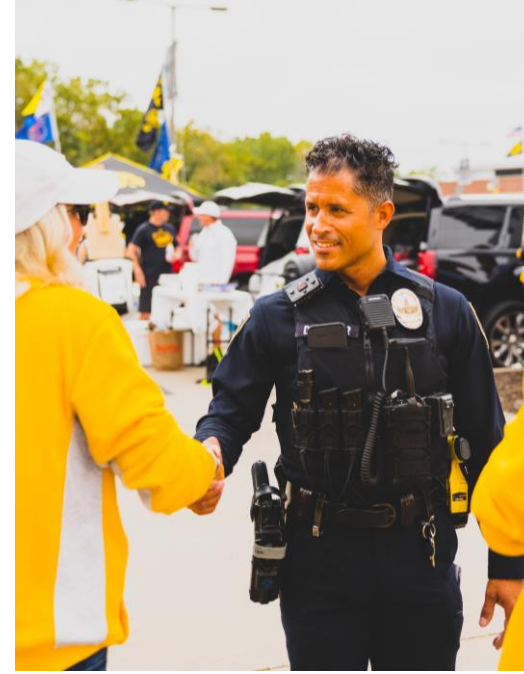
Emergency Communications

- Our dispatchers answer campus 911 calls 24/7.
 - Send appropriate first responders.
 - Remain on the line and provide instructions on how to stay safe until help arrives.
 - Trained to assist callers with providing emergency medical care until help arrives.



Police Department

- State-sworn Police Officers (40).
- Patrol 24 hours.
 - Two patrol watches.
- Enforces state, local, and federal laws.

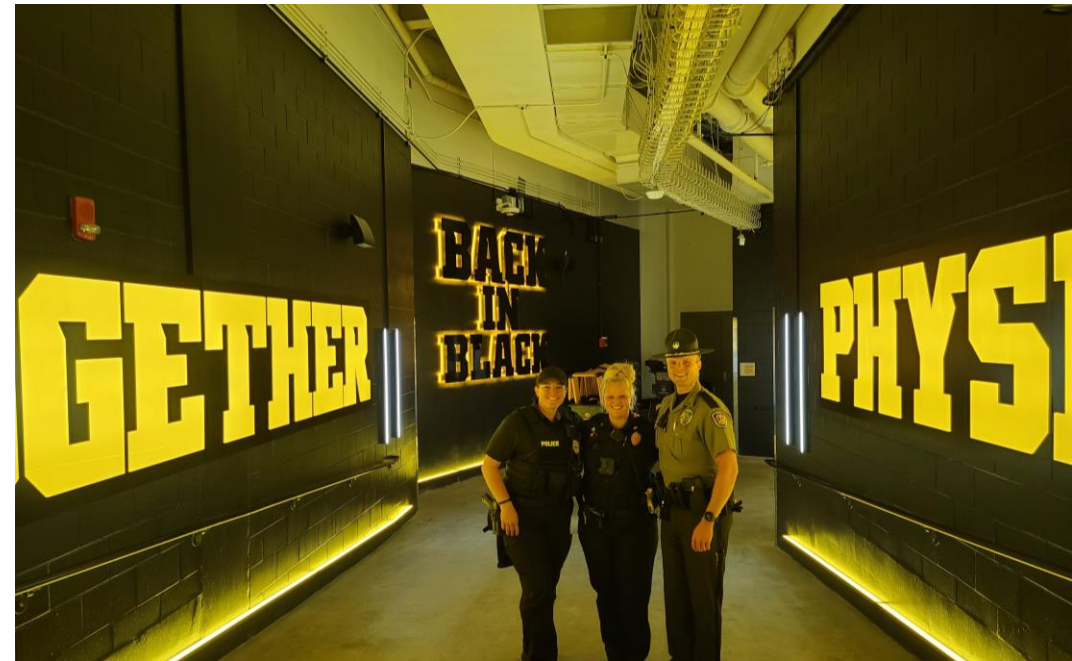


Police Department

- All law enforcement agencies have a **mutual aid agreement**.

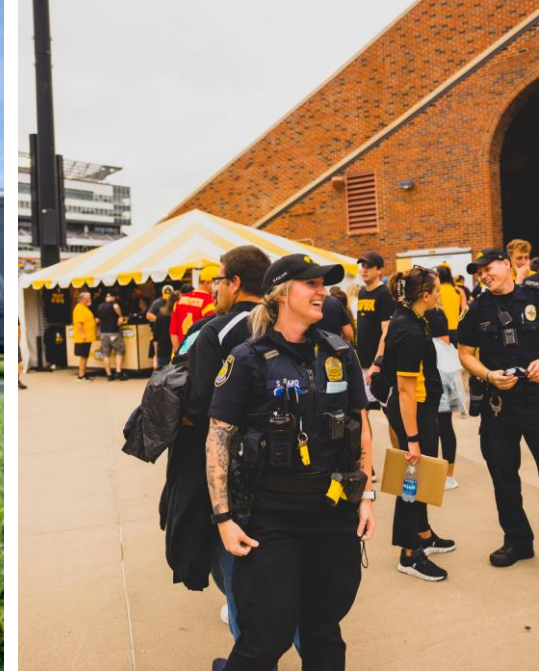
- Iowa City Police
- Coralville Police
- Johnson County Sheriff
- North Liberty Police
- University Heights Police

*Provide mutual assistance to one another in an emergency.



Police Department

- K-9
 - Track missing persons and suspects.
 - Trained in explosives detection.
- Johnson County Bomb Squad
 - Participant of the Johnson County Bomb Squad.
- Special Response Team
 - Participant of the Special Response Team.



Police Department

- Detective
 - Participates in the Johnson County Sexual Assault Response Team.
- Drug Task Force
 - Participates with the Johnson County Drug Task Force.
- Threat Assessment Team
 - Investigates, monitors, and provides support for people exhibiting concerning behavior.



Police Department

- Dive Team
 - Participates in the Johnson County Dive Team.
- JFACT
 - Joint forensic analysis cyber team.



Police Department

- Special focus / training on:
 - Community Outreach
 - Fair and Impartial Policing
 - Crisis Intervention Training
 - Active Shooter Response



IOWA

Campus Partners

Holistic Approach

Holistic Approach

We have campus and community partners who assist us with response and providing follow up services for:

- Mental health support
- Crisis intervention services
- Other follow-up support



GuideLink Center

Assist individuals experiencing a psychiatric or psychological crisis from a mental illness, depression, or suicidal thoughts who need a quick response.



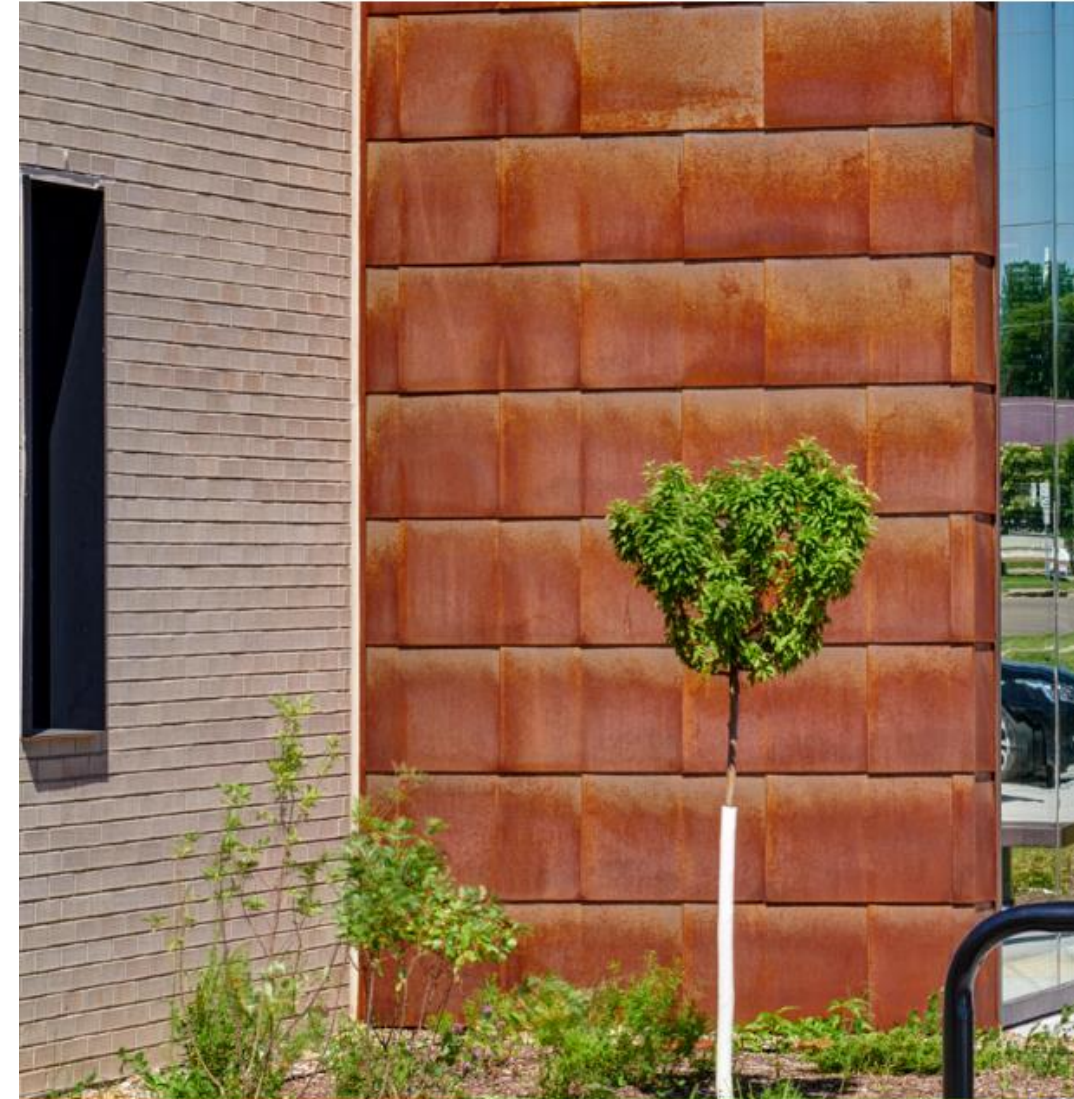
GuideLink Center

- 24/7 services.
- Behavioral Health Crisis Stabilization.
 - Prompt evaluation and treatment for individuals presenting with acute symptoms or distress.
- Sobering Service.



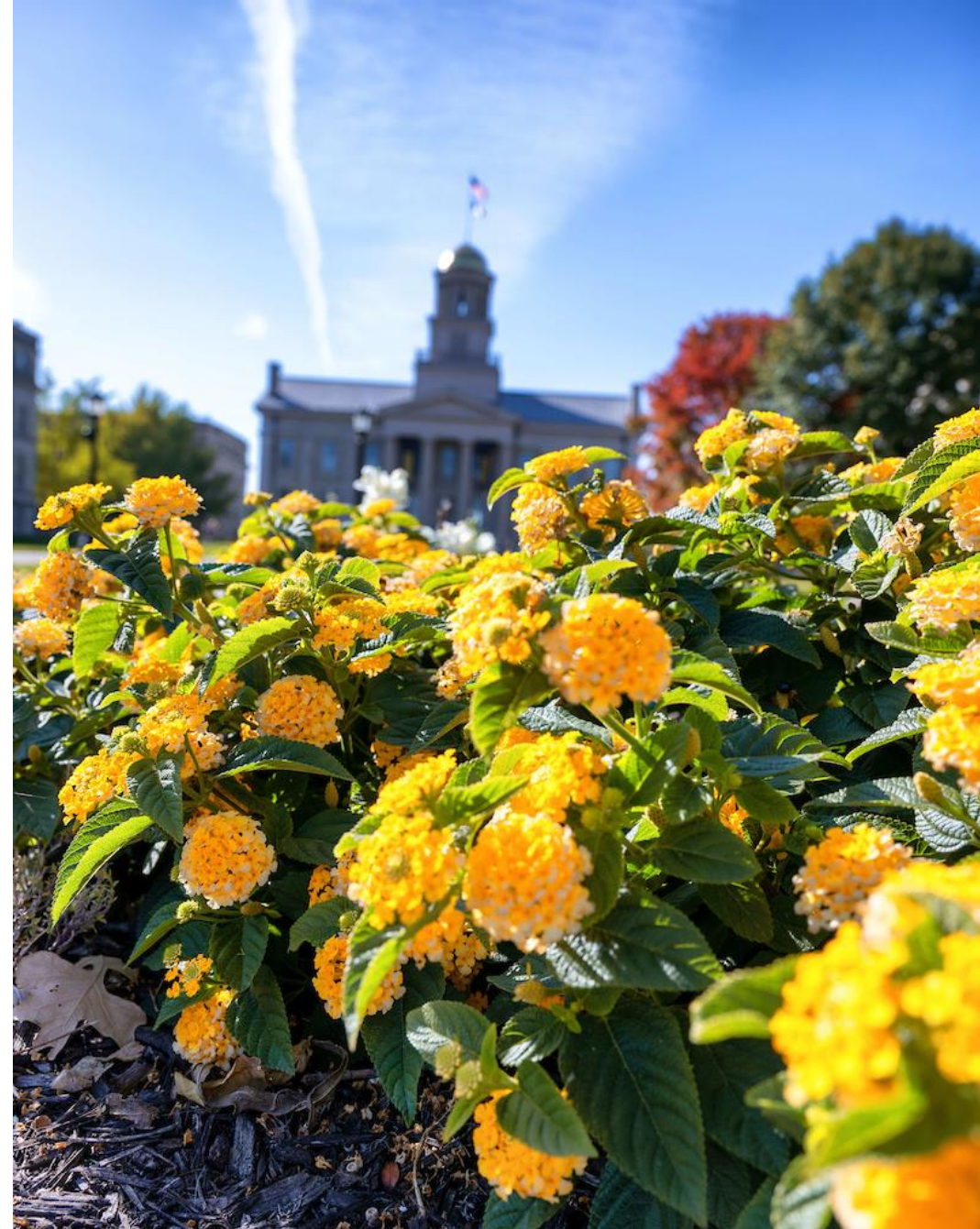
GuideLink Center

- Detoxification
- Referrals to Affiliate Partners:
 - Community mental health services
 - Sub-acute stabilization services (beyond 5-day stays)
 - Substance use services
 - Peer support
 - General medical services
 - Housing support
 - Vocational support



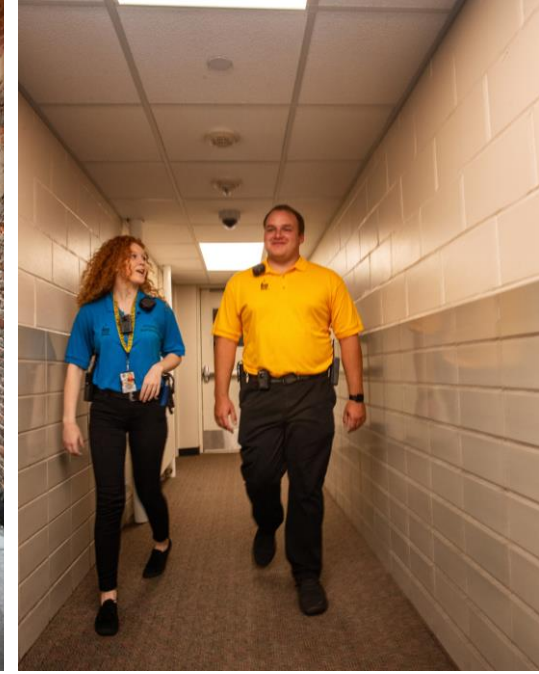
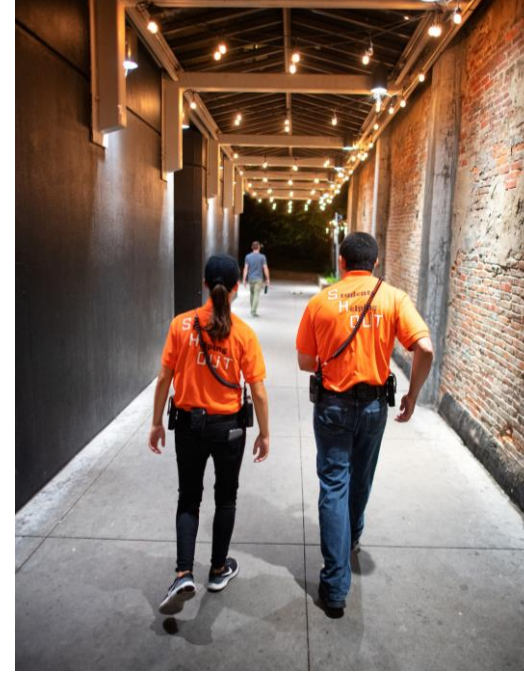
Student Care Coordinators

- Response option for mental health concerns.
- Manage follow-up care for students who:
 - Had law enforcement contact
 - Used crisis intervention services
 - Have been hospitalized
 - Basic needs



Security Services

- Full-time Security Officers.
- Student Security Officers:
 - Operate our safe ride service.
 - Patrol campus buildings and residence halls.
 - Deter crime and identify safety issues.
- CPR-AED certified.



Emergency Management

- Emergency Management Director:
 - Ensures campus is prepared to mitigate, respond to, and recover from emergencies and disasters.



Fire Safety

- Fire Safety Coordinator:
 - Makes sure community is prepared to prevent and respond to fires.
 - Ensures campus buildings are compliant with state, local, federal laws.
 - Provides fire and life safety training courses for students, faculty, and staff.



Security Engineering Services

- Manages:
 - Access to university buildings.
 - Alarm and intrusion detection systems.
 - Security camera systems.
- Uses technology to:
 - Deter criminal activity.
 - Prevent unauthorized access to campus spaces.
 - Provide valuable evidence if there is a safety incident.



Threat Assessment Team

- Assesses reports of concerning behavior.
- Intervenes with resources to maintain campus safety.
- Develops safety plans for those impacted.
- **If you see something, say something!** Report troubling or suspicious behavior.



WHAT SAFETY SERVICES ARE AVAILABLE?



IOWA

Office of Campus Safety

Free Safety Services

NITE RIDE

- Free late-night transportation service.
- 10 p.m. to 5 a.m. daily.
- Driven by security officers.
- Express rides available for \$1.
- Bookmark the request link!

[NITERIDE.ITS.UIOWA.EDU](https://niteride.its.uiowa.edu)



RAVE GUARDIAN

- Free safety app.
- Set a safety timer for walk home.
- Call 911 with the touch of a button.
- Text anonymous tips to police.
- Download the app!
 - Sign up using UI email address.

HELP & RESOURCES ARE JUST ONE CLICK AWAY



DISCREETLY CONTACT CAMPUS SAFETY
Prevent dangerous situations by discreetly sending anonymous tips with a photo or location as needed.

STAY INFORMED
Received alerts based on your location, even when you don't have a cell signal.

NEVER TRAVEL ALONE
Set a virtual safety timer for an extra layer of safety wherever you are.

FIND THE RESOURCES YOU NEED
Access emergency procedures, schedules and other key documents in a custom content portal.

MAKE THE RIGHT CALL
With a custom call directory of your organization's important numbers.

HELP IS ON THE WAY
With a push of a button, you can directly connect to 9-1-1 or campus safety in an emergency.

 **RAVE**Guardian



RaveGuardian.com

IOWA

Office of Campus Safety

BIKE INDEX

- Register your bike for free.
- Creates a record of ownership.
- Helps us return it to you if it's lost, stolen, or impounded.
- Register your bike!
 - [BIKEINDEX.ORG/UIOWA](https://bikeindex.org/uiowa).



SAFETY TRAINING

- We offer several free and low-cost safety courses:
 - Civilian Response to Active Shooter Events.
 - Rape Aggression Defense.
 - Personal Safety and Self-Protection.
 - CPR-BLS
 - Stop the Bleed.



COMMUNITY OUTREACH

- **We are here to help you!**
 - Safety training & presentations.
 - Community outreach around crime prevention.
 - Crime Prevention through Environmental Design.
 - Reach out any time with questions.
 - police@uiowa.edu.



**HOW WILL I KNOW
IF THERE IS AN EMERGENCY?**



IOWA

Office of Campus Safety

Emergency Notifications

HAWK ALERT

- For an incident that is **happening now** and poses an immediate risk to the safety/health of campus.
- Includes instructions on what the threat is, where it is, and what action to take to stay safe.



HAWK ALERT

- Text message is the fastest way to receive an alert.
- Sent to all students, faculty, and staff via:
 - Phone call.
 - Text message.
 - Email
 - Desktop Notification.*



HAWK ALERT

- Parents **cannot** sign up for these messages.
- Updates are posted on:
 - **E.UIOWA.EDU**
 - Twitter (@uiowa_police)



CRIME ALERT

- For an incident that has **already occurred** but could present as an ongoing threat.
- Include safety tips specific to the incident.



CRIME ALERT

- Sent to all students, faculty, and staff via:
 - Email
- Posted on our website:
 - [SAFETY.UIOWA.EDU](https://safety.uiowa.edu).



CAMPUS SAFETY WEBSITE

- [SAFETY.UIOWA.EDU](https://safety.uiowa.edu)
 - Comprehensive guide to safety resources.
 - Detailed safety tips for issues that most frequently impact students.
 - Safety news and updates.
 - Update Hawk Alert settings.



CAMPUS SAFETY

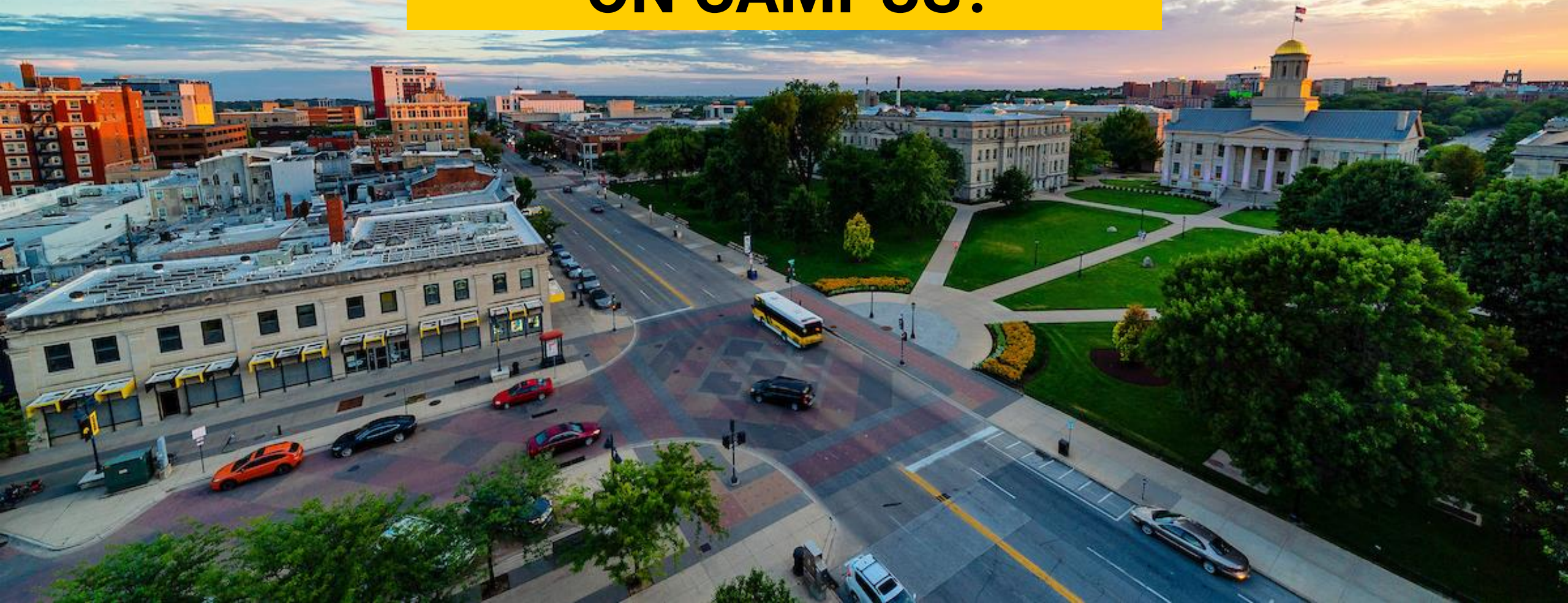


SAFETY IS SUBJECTIVE

- It depends on the environment you are used to.
- Compare data for multiple schools.
 - Department of Education website.
 - [OPE.ED.GOV/CAMPUSSAFETY](https://ope.ed.gov/campusafety).
- Annual Safety and Security Report
 - Available on our website.



**WHAT SHOULD I THINK
ABOUT AFTER I ARRIVE
ON CAMPUS?**



IOWA

Office of Campus Safety

Safety Tips

GENERAL ADVICE

- Lock your door.
- Do not hold residence hall doors open for others.
- Be aware of your surroundings.
 - Cell phones and music can distract from people, cars, and other threats.
- Trust your instincts.
 - **If you see something, say something.**



BE AWARE OF SCAMS

- College students are often targets.
- Educate yourself on scams, sextortion, and warning signs.
- Sextortion:
 - Contact via dating, gaming, or social media site.
 - Express strong emotions.
 - Gather compromising images.
 - Threaten to share with family, friends, co-workers.
 - **DO NOT PAY.** Report it to police.

FRAUD ALERT

TRANSPORTATION

- Cars:
 - Have up to date insurance and registration documents inside vehicle.
 - Check on car at least every other week (start and drive).
 - Have a spare key.



TRANSPORTATION

- Bikes:
 - Register your bike using Bike Index.
 - [BIKEINDEX.ORG/UIOWA](https://bikeindex.org/uiowa).
 - Use a good lock.
 - check on it regularly.



IOWA

Office of Campus Safety

Sexual Assault

Iowa Code - 709

**We will discuss sexual assault during this portion of the presentation*

SEXUAL ASSAULT

A **sex act** is against a person's will if **CONSENT** is attained by threats of violence, if they are asleep, unconscious, or incapacitated due to drugs or alcohol or any other reason, or if the person has a disability that limits their ability to make decisions in sexual matters...if the other person is a child.



SEXUAL ASSAULT

- Present on all college campuses.
- Only 5% are reported.
- About 8 in 10 incidents are committed by someone known to the victim.
- Most sexual assaults involve alcohol.

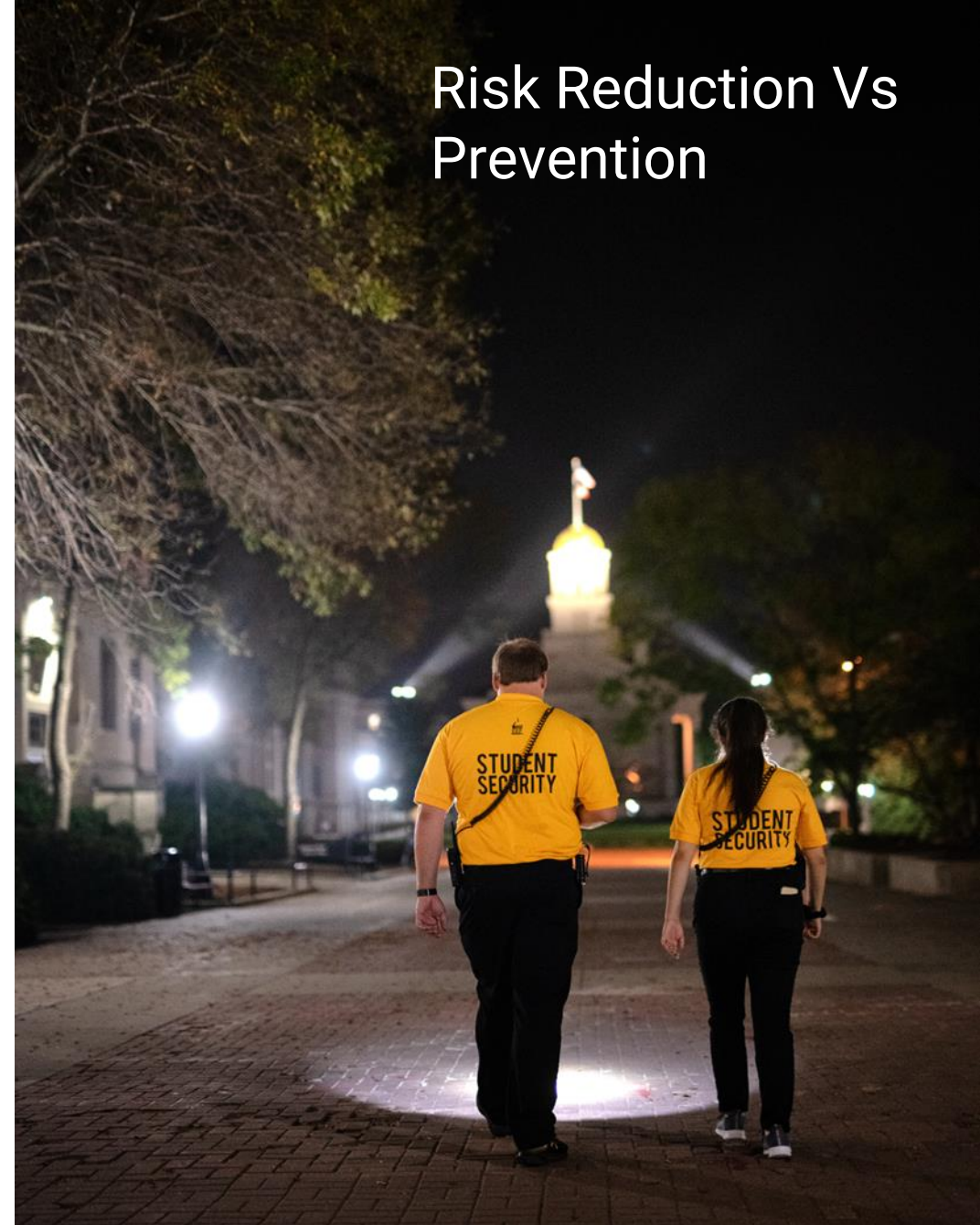
Source: Rape Abuse and Incest National Network (RAINN)



SEXUAL ASSAULT

Risk reduction techniques often aid to reduce one or more of these factors:

- Watch their drink.
- Trust their instincts.
- Use the buddy system.
- Be assertive.
- Avoid mixing sexual decisions with alcohol.



BYSTANDER INTERVENTION

- Most common type of sexual assault is committed by someone known to the victim.
- If you feel uneasy, trust your instincts and attempt to disrupt the chain of events.
 - Create a distraction and involve others.
 - Make a commitment to make sure everyone has a safe way home.
 - Being an active bystander does not require you to put yourself at risk.



CONSENT

- Consensual sex occurs when both partners agree to engage in sexual activity.
 - Must always be knowing and voluntary.
 - A person **cannot** consent if they are asleep, unconscious, or incapacitated due to drugs/alcohol.



SEXUAL ASSAULT RESOURCES

Victim Advocates

- [Rape Victim Advocacy Program \(RVAP\)](#)
(319) 335-6000 (24-hour hotline)
- [Domestic Violence Intervention Program](#)
(800) 373-1043 (24-hour hotline)
- [Monsoon Asians & Pacific Islanders in Solidarity](#)
(866) 881-4641 (24-hour hotline)
- [Nisaa African Family Services](#)
(319) 338-7617
- [Transformative Healing](#)
(319) 389-8430

Counseling

- [University Counseling Service](#) (for students)
(319) 335-7294
- [Women's Resource and Action Center](#)
(319) 335-1486
- [Rape Victim Advocacy Program \(RVAP\)](#)
(319) 335-6000
- **UI 24/7 Support and Crisis Line**
(844) 461-5420

SAFETY RESOURCES

Reporting Crimes and Concerns

Emergency:

Call 911

Non-emergency, on-campus:

University of Iowa Police Department

319-335-5022

Non-emergency, off-campus:

Iowa City Police Department

319-356-5275

Suspicious or troubling behaviors:

Threat Assessment Team

319-384-2955; uitat@uiowa.edu

Where to find safety information

Campus Safety information, news, and tips:

SAFETY.UIOWA.EDU

Emergency Updates:

E.UIOWA.EDU

Facebook/Instagram:

Office of Campus Safety

[@uiowa_safety](https://www.facebook.com/uiowa_safety)

Twitter: [@uiowa_police](https://twitter.com/uiowa_police)

IOWA

Office of Campus Safety

Questions?

→ safety.uiowa.edu

Community Outreach Team
Police Department

319-335-5022

maria-sanchez@uiowa.edu

alton-poole@uiowa.edu

IOWA